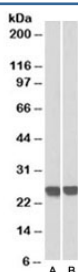


## GRB2 Antibody [Biotin Conjugate] (R35139BTN)

Catalog No.	Formulation	Size
R35139BTN	0.5 mg/ml in 1X TBS, pH7.3, with 0.5% BSA (US sourced) and 0.02% sodium azide	100 ug

[Bulk quote request](#)

Availability	1-3 business days
Species Reactivity	Human, Mouse, Rat, Pig
Predicted Reactivity	Cow, Dog
Format	Biotin Conjugate
Host	Goat
Clonality	Polyclonal (goat origin)
Isotype	Goat Ig
Purity	Antigen affinity
Gene ID	2885
Applications	Western Blot : 0.3-1ug/ml Immunohistochemistry (FFPE) : suitable ELISA (peptide) LOD : 1:32000
Limitations	This GRB2 antibody is available for research use only.



Western blot of MOLT4 (A) and human thymus (B) lysates with GRB2 antibody at 0.3ug/ml. Predicted molecular weight ~25kDa. An NAP blocker was used in place of non-fat milk as blocking solution and diluent. (1)

### Description

Additional name(s) for this target protein: Growth factor receptor-bound protein 2

### Application Notes

Optimal dilution of the GRB2 antibody should be determined by the researcher.

1. Do not use a blocking agent or diluent that contains biotin (including milk and some BSA preparations) when testing with biotinylated antibodies. A non-animal protein (NAP) blocker is recommended.

## Immunogen

Amino acids PRNYVTPVNRNV were used as the immunogen for this GRB2 antibody.

## Storage

Aliquot and store the GRB2 antibody at -20oC.